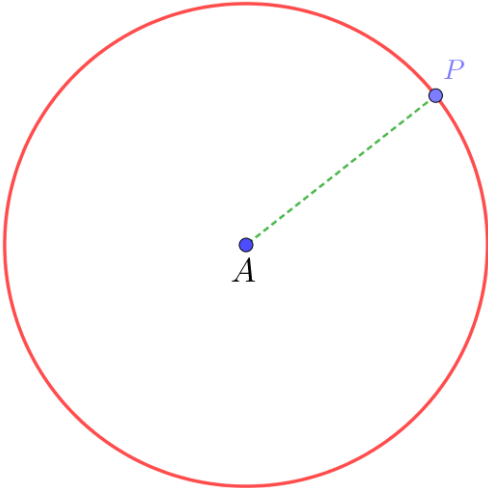
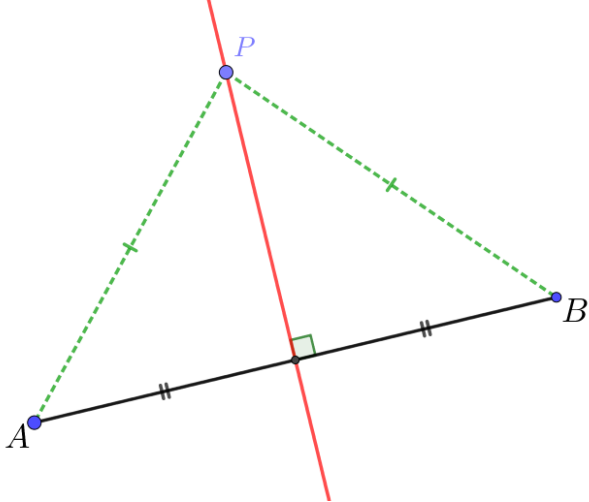
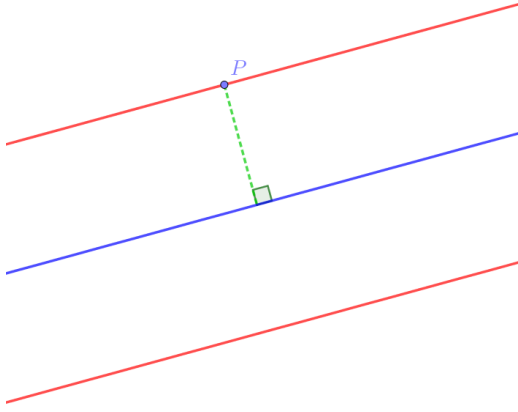
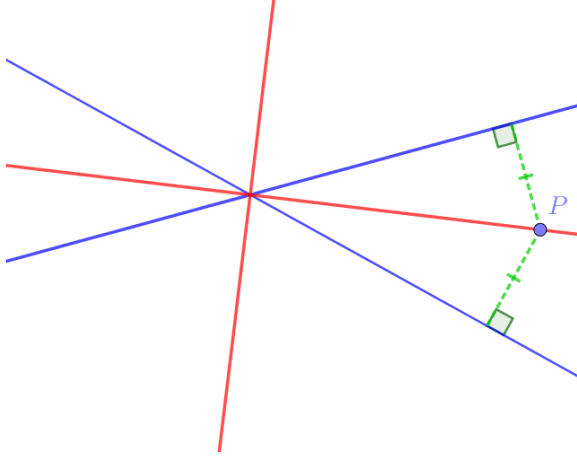
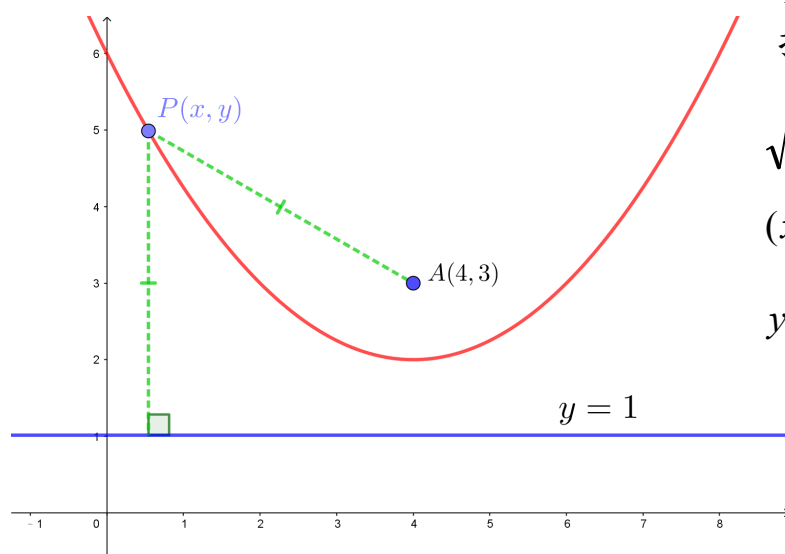


Common Loci 常見軌跡

<p>1. fixed distance from a fixed point 與一固定點保持固定距離</p>	<p>2. equidistant from two fixed points 與兩固定點保持等距</p>
 <p style="text-align: center;">Circle 圓形</p>	 <p style="text-align: center;">Perpendicular Bisector 垂直平分線</p>
<p>3. fixed distance from a straight line 與一直線保持固定距離</p>	<p>4. equidistant from two straight lines 與兩直線保持等距</p>
 <p style="text-align: center;">Parallel Lines 平行線</p>	 <p style="text-align: center;">Angle Bisectors 角平分線</p>

5. equidistant from a fixed point and a straight line
與一固定點及一直線保持等距



The equation of the parabola
拋物線之方程

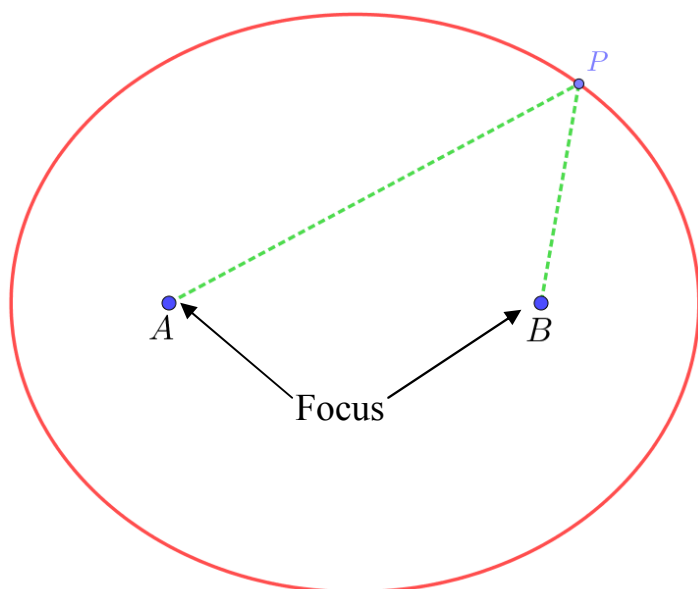
$$\sqrt{(x-4)^2 + (y-3)^2} = y-1$$

$$(x-4)^2 + (y-3)^2 = (y-1)^2$$

$$y = \frac{1}{4}x^2 - 2x + 6$$

Parabola 拋物線

6. sum of distances from two fixed points is a constant
與兩固定點之距離的和為常數



$$PA + PB = \text{constant 常數}$$

Ellipse 橢圓形